

State of Wyoming Corner Record

(In compliance with the **CORNER PERPETUATION AND FILING ACT**, Wyoming Statutes, 1997 Section 33-29-140 et. seq., and the Rules and Regulations of the Board of Professional Engineers and Professional Land Surveyors)

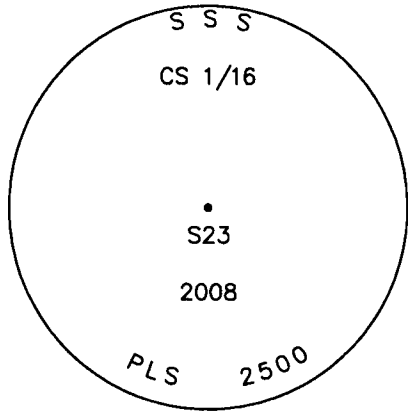
Reverse side of this form may be used if more space is needed.

ORIGINAL RECORD: NO ORIGINAL SURVEY.

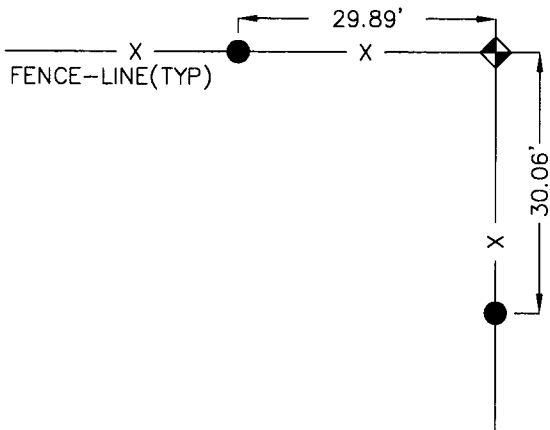
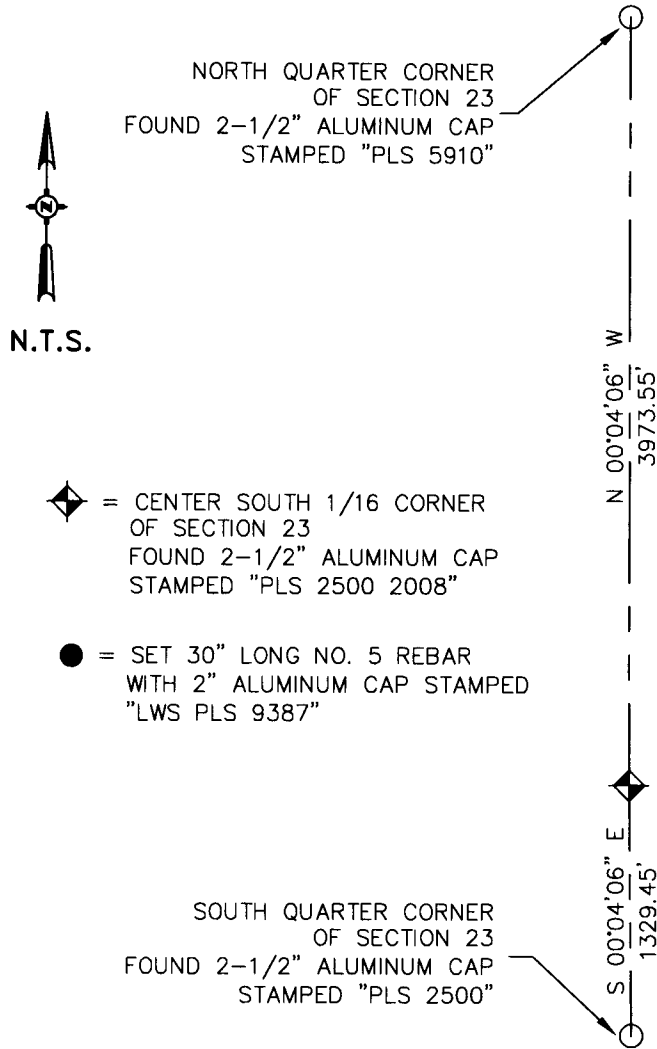
FOUND: 2-1/2" ALUMINUM CAP STAMPED "PLS 2500 2008" AT FENCE CORNER.

SET: TWO (2) REFERENCE MONUMENTS: 30" LONG NO. 5 REBAR WITH 2" ALUMINUM CAP STAMPED "LWS PLS 9387" IN FENCE LINE.

NOTE: BEARINGS AND DISTANCES HEREON ARE BASED ON UTM ZONE 13F - NAD83/NAVD88 AND ARE SHOWN AT GRID. IN ORDER TO OBTAIN GROUND DISTANCES USE A COMBINED SCALE FACTOR OF 1.0006282796.



Monument Inscription



Reference Monument Location

Monument Location

Date of Field Work: 05/31/2012

Office Reference: Project #50812

Cross Index Plat

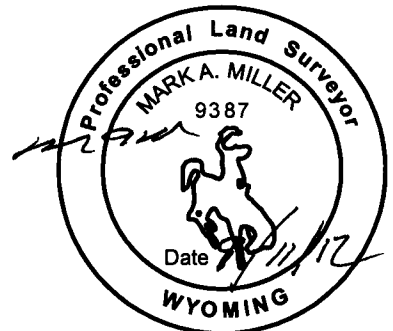
	1	2	3	4	5	6	7	8	9	10	11	12	13	14	15	16	17	18	19	20	21	22	23	24	25		
A																											A
B																											B
C		6																									C
D																											D
E																											E
F																											F
G																											G
H																											H
J																											J
K																											K
L																											L
M																											M
N																											N
O																											O
P																											P
Q																											Q
R																											R
S																											S
T																											T
U																											U
V																											V
W																											W
X																											X
Y																											Y
Z																											Z
	1	2	3	4	5	6	7	8	9	10	11	12	13	14	15	16	17	18	19	20	21	22	23	24	25		

Firm/Agency, Address

Mark Miller, PLS 9387
 LW Survey Co.
 12345 W. Alameda Parkway
 Suite 205
 Lakewood, CO 80228
 Telephone Number: (303) 658-0358

This corner record was prepared by me or under my direction and supervision.

SEAL & SIGNATURE



RECORDED 9/25/2012 AT 11:56 AM REC# 599589 BK# 2296 PG# 877
 DEBRA K. LATHROP, CLERK OF LARAMIE COUNTY, WY PAGE 1 OF 1

Corner Name Center South 1/16 Corner Section 23, T 13 N, R 63 W, 6th P.M. Cross-Index No.: Q-19

County: Laramie Wyoming

SBRPEPLS/PLSW: March 1994; PLSW January 1998